

# MEGOHMMETERS

## DIGITAL/ANALOG & MULTI-FUNCTION HANDHELD

### MODELS 6522, 6524, 6526, 6532, 6534 & 6536



## SPECIFICATIONS

MODELS	6522	6524	6526	6532	6534	6536
<b>INSULATION TESTS</b>						
Test Voltages	250V, 500V, 1000V	50V, 100V, 250V, 500V, 1000V	50V, 100V, 250V, 500V, 1000V	50V, 100V	10V, 25V, 100V, 250V, 500V	Variable 10 to 100V (1V steps)
Insulation Resistance	40GΩ (40,000MΩ)	200GΩ (200,000MΩ)	200GΩ (200,000MΩ)	20GΩ (20,000MΩ)	50GΩ (50,000MΩ)	20GΩ (20,000MΩ)
PI/DAR Ratios	-	Yes	Yes	Yes	-	-
Test Lock	Yes					
Timer	0 to 40min	0 to 40min	0 to 40min	0 to 40min	0 to 40min	0 to 40min
Auto Discharge	Yes					
Automatic Test Inhibit	>25V					
<b>DMM FUNCTIONS</b>						
Voltage	700V <sub>AC</sub> /DC					
Resistance	-	1000kΩ	1000kΩ	1000kΩ	1000kΩ	1000kΩ
Continuity	10Ω	10Ω, 100Ω	10Ω, 100Ω	10Ω, 100Ω	10Ω, 100Ω	10Ω, 100Ω
Test Current	200mA					
Capacitance Measurement	-	-	0.1n to 10μF	0.1n to 10μF	-	-
Frequency	-	15.3 to 800Hz	15.3 to 800Hz	15.3 to 800Hz	-	-
<b>GENERAL FUNCTIONS</b>						
Alarm	-	Yes	Yes	Yes	Yes	Yes
Δ Rel						
Auto Power OFF	Yes					
Data Hold	Yes					
Test Lead Compensation	Yes					
Remote Probe	Yes (optional)					
Memory	-	300 measurements	1300 measurements	1300 measurements	1300 measurements	-
Bluetooth	-	-	2.1 Class II	2.1 Class II	2.1 Class II	-
DataView <sup>®</sup> Software	-	-	Included	Included	Included	-
Display Type	Digital w/Analog Bargraph					
Display Counts	4000					
Backlight	Yes					
Safety	600V CAT IV					
Power Supply	6 x AA Alkaline					
Protection	IP54/IK 04					
Magnetic Mount	Yes					
Additional Features	-	-	Green/Red Pass/Fail Indicator	Cable length measurement (0 to 100km)	-	-
Applications	Industrial Maintenance	Industrial Maintenance	Industrial Maintenance	Telecom	Electronics, ESD	Avionics, Space, Defense

### CATALOG NO. DESCRIPTION

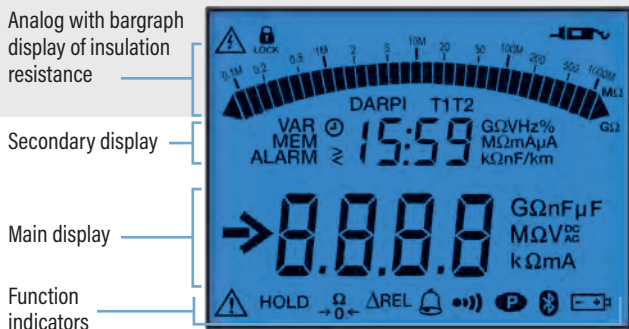
2155.51	Megohmmeter Model 6522 (Digital w/Analog Bargraph, 250V, 500V, 1000V, Continuity, V)
2155.52	Megohmmeter Model 6524 (Digital w/Analog Bargraph, Alarm, 50V, 100V, 250V, 500V, 1000V, Ohm, Continuity, V, kΩ, Memory)
2155.53	Megohmmeter Model 6526 (Digital w/Analog Bargraph, Alarm, 50V, 100V, 250V, 500V, 1000V, Ohm, Continuity, V, kΩ, Capacitance, Memory, Bluetooth w/DataView <sup>®</sup> software)
2155.54	Megohmmeter Model 6532 (Digital w/Analog Bargraph, Alarm, 50V, 100V, Ohm, Continuity, V, kΩ, Cap, Memory, Bluetooth w/DataView <sup>®</sup> software)
2155.55	Megohmmeter Model 6534 (Digital w/Analog Bargraph, Alarm, 10V, 25V, 100V, 250V, 500V, Ohm, Continuity, V, kΩ, Memory, Bluetooth w/DataView <sup>®</sup> software)
2155.56	Megohmmeter Model 6536 (Digital w/Analog Bargraph, Alarm, Variable 10 to 100V, Ohm, Continuity, V, kΩ)
2155.57	Megohmmeter Model 6536 ESD Floor Kit (Meter, set of 2, 5lb weights and carrying case)

# MEGOHMMETERS

## DIGITAL/ANALOG & MULTI-FUNCTION HANDHELD

### MODELS 6522, 6524, 6526, 6532, 6534 & 6536

### Front Panel & Functional Displays



Analog with bargraph display of insulation resistance

Secondary display

Main display

Function indicators



### FEATURES\*

- True Megohmmeter®
- Test voltage from 10 to 1000V
- Insulation resistance up to 200GΩ
- Manual, Lock, Timer modes & PI/DAR Ratio calculations
- Alarms with Green/Red Pass/Fail indicator light
- 200mA/20mA continuity with active protection without fuses
- Measurement of V (TRMS & DC), F, Ω, kΩ, Hz, C and cable length
- ΔRel mode for comparison measurements
- Configurable alarms
- Data retrieval
- Automatic discharge after test
- Automatic test inhibit if device under test is energized >25V

\* Features are model dependent  
Bluetooth on selected models

#### MODEL 6522 Catalog #2155.51 & MODEL 6524 Catalog #2155.52

Meter, soft carrying case, two 5 ft. color-coded (red/black) leads, two color-coded (red/black) alligator clips, one black test probe, 6 AA batteries and user manual.

#### MODEL 6526 Catalog #2155.53

Meter, soft carrying case, two 5 ft. color-coded (red/black) leads, two color-coded (red/black) alligator clips, one black test probe, 6 AA batteries, quick start guide, USB stick with DataView® software and user manual.

#### MODEL 6532 Catalog #2155.54 & MODEL 6534 Catalog #2155.55

Meter, soft carrying case, two 5 ft. color-coded (red/black) leads, two color-coded (red/black) alligator clips, one black test probe, two color-coded (red/black) grip probes, 6 AA batteries, quick start guide, USB stick with DataView® software and user manual.

#### MODEL 6536 Catalog #2155.56

Meter, soft carrying case, two 5 ft. color-coded (red/black) leads, two color-coded (red/black) alligator clips, one black test probe, two color-coded (red/black) grip probes, 6 AA batteries, and user manual.

#### MODEL 6536 ESD Floor Kit Catalog #2155.57

Meter, field case, two 5 ft. color-coded (red/black) leads, two color-coded (red/black) alligator clips, one black test probe, two color-coded (red/black) grip probes, two 5 lb. weights with conductive rubber bottom pad, two 4mm non-insulated adapters, 6 AA batteries, and user manual.

Access to the instrument information and setup for Test Lock, Timer, PI/DAR and Times

Navigation buttons:

- Display instrument information
- Turn buzzer on or off
- Turn power saver on or off
- Program test time
- Select displayed parameters
- Program alarm set points

Memory recall/Bluetooth activation

Alarm activation/deactivation with Pass/Fail indication (model dependent)



Test lead resistance compensation

ΔRel set and compare measurements to a reference value

Test button

Test function selection switch



## DataView®

### DATA ANALYSIS AND REPORTING SOFTWARE

#### CONFIGURE MEGOHMMETER

### MODELS 6526, 6532 & 6534

- Print reports of all test results
- Run tests from your computer with a simple click and execute process
- Capture and display data in real-time

### PRODUCT INCLUDES



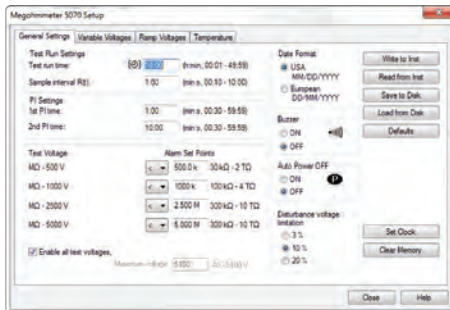
Shown: Model 6532

## CONFIGURE ALL FUNCTIONS OF THE MEGOHMMETER MODELS 1060, 5060, 5070, 6526, 6532, 6534, 6550 & 6555

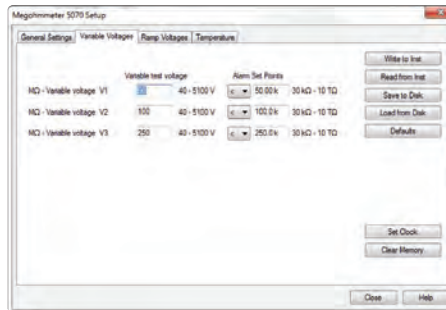


- Print reports of all test results
- Select test voltage and run tests from your computer with a simple click and execute process
- Capture and display data in real-time
- Retrieve data from the instrument's memory for:
  - Over 1500 insulation resistance measurements
  - Over 4000 resistance measurements
- Display DAR and PI ratios
- Plot graphs of manual and timed tests
- Include your analysis comments section with the report
- Store a library of setups for different applications
- Certification of results through report generation
- Free updates are available on our website [www.aemc.com](http://www.aemc.com)

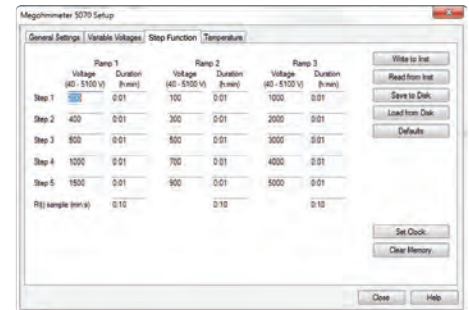
## TYPICAL DATAVIEW® FUNCTIONAL DISPLAYS



Four tabbed dialog boxes allow for clear and easy setup of all functions of the Model 5070, including setup for variable voltage and alarm set points, as well as step voltage tests and temperature compensation.

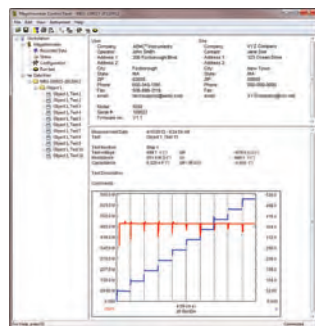


Variable Voltage selections from 40 to 5100V and can also be programmed along with alarm set points.

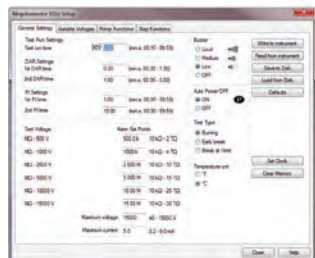


Model 5070 includes Step Function which allows programming of three different ramp test profiles, each containing up to five voltage steps between 40 and 5100V and time per step of up to 10 hours.

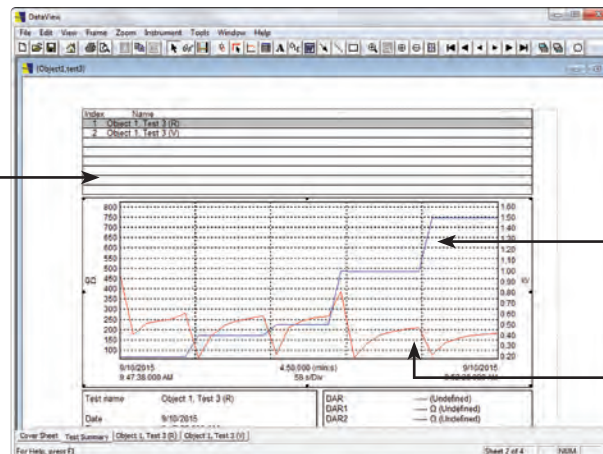
## DISPLAYS



All stored test results presented on screen.



Clear and straightforward set up of parameters.



Run test and display text and graphical results from one dialog box. Model 5070 also displays step voltage.

# MEGOHMMETERS

## SELECTION CHART

AEMC MODEL NUMBER	AEMC CATALOG NUMBER	TEST VOLTAGE	INSULATION RANGE	RESISTANCE RANGE	CONTINUITY RANGE	CAPACITANCE RANGE	VOLTAGE DETECTION	POWER SOURCE	DISPLAY	DATAVIEW SOFTWARE
6501	2126.51	500V	0.5 to 200M $\Omega$	0 to 500k $\Omega$	0 to 100 $\Omega$	—	0 to 600Vac	Hand-cranked	Analog	No
6503	2126.52	250V 500V 1000V	1 to 500M $\Omega$ 1 to 500M $\Omega$ 10 to 5000M $\Omega$	—	—	—	0 to 600Vac	Hand-cranked	Analog	No
6527	2126.53	250V 500V 1000V	1k $\Omega$ to 4G $\Omega$ 1k $\Omega$ to 4G $\Omega$ 1k $\Omega$ to 4G $\Omega$	0.0 to 400.0k $\Omega$	0.00 to 400 $\Omega$	—	0 to 600Vac 0 to 1000Vdc	6 x AA Alkaline Batteries	Digital/ Analog	No
1026	2117.72	250V 500V 1000V	1k $\Omega$ to 4G $\Omega$	4k $\Omega$	0 to 40 $\Omega$	—	0 to 600Vac/dc	8 x AA Alkaline Batteries	Digital/ Analog	No
6522	2155.51	250V 500V 1000V	50k $\Omega$ to 40G $\Omega$	—	10 $\Omega$	—	700Vac/dc	6 x AA Alkaline Batteries	Digital/ Analog	No
6524	2155.52	50V 100V 250V 500V 1000V	10k $\Omega$ to 200G $\Omega$	1000k $\Omega$	10 $\Omega$ , 100 $\Omega$	—	700Vac/dc	6 x AA Alkaline Batteries	Digital/ Analog	No
6526	2155.53	50V 100V 250V 500V 1000V	10k $\Omega$ to 200G $\Omega$	1000k $\Omega$	10 $\Omega$ , 100 $\Omega$	0.1n to 10 $\mu$ F	700Vac/dc	6 x AA Alkaline Batteries	Digital/ Analog	Yes
6532	2155.54	50V 100V	10k $\Omega$ to 20G $\Omega$	1000k $\Omega$	10 $\Omega$ , 100 $\Omega$	0.1n to 10 $\mu$ F	700Vac/dc	6 x AA Alkaline Batteries	Digital/ Analog	Yes
6534	2155.55	10V 25V 100V 250V 500V	2k $\Omega$ to 50G $\Omega$	1000k $\Omega$	10 $\Omega$ , 100 $\Omega$	—	700Vac/dc	6 x AA Alkaline Batteries	Digital/ Analog	Yes
6536	2155.56	10V 100V	2k $\Omega$ to 20G $\Omega$	1000k $\Omega$	10 $\Omega$ , 100 $\Omega$	—	700Vac/dc	6 x AA Alkaline Batteries	Digital/ Analog	No
6536 ESD Floor Kit	2155.57									
1050	2130.01	50V 100V 250V 500V 1000V	2k $\Omega$ to 200G $\Omega$ 4k $\Omega$ to 400G $\Omega$ 10k $\Omega$ to 1T $\Omega$ 20k $\Omega$ to 2T $\Omega$ 40k $\Omega$ to 4T $\Omega$	0.01 to 400k $\Omega$	0.01 to 39.99 $\Omega$	0.005 to 4.999 $\mu$ F	0 to 1000Vac/dc	8 x 1.5V C Cell Batteries	Digital/ Analog	No
1060	2130.03	50V 100V 250V 500V 1000V	2k $\Omega$ to 200G $\Omega$ 4k $\Omega$ to 400G $\Omega$ 10k $\Omega$ to 1T $\Omega$ 20k $\Omega$ to 2T $\Omega$ 40k $\Omega$ to 4T $\Omega$	0.01 to 400k $\Omega$	0.01 to 39.99 $\Omega$	0.005 to 4.999 $\mu$ F	0 to 1000Vac/dc	Rechargeable NiMH Battery	Digital/ Analog	Yes
6505	2130.18	500V 1000V 2500V 5000V	30k $\Omega$ to 2000G $\Omega$ 100k $\Omega$ to 4000G $\Omega$ 100k $\Omega$ to 10,000G $\Omega$ 300k $\Omega$ to 10,000G $\Omega$	—	—	0.005 to 49.99 $\mu$ F	2500Vac 4000Vdc	Rechargeable NiMH Battery	Digital/ Analog	No
5050	2130.20	500V 1000V 2500V 5000V	30k $\Omega$ to 2T $\Omega$ 100k $\Omega$ to 4T $\Omega$ 100k $\Omega$ to 10T $\Omega$ 300k $\Omega$ to 10T $\Omega$	—	—	0 to 49.99 $\mu$ F	2500Vac 4000Vdc	Rechargeable NiMH Battery	Digital/ Analog	No
5060	2130.21	500V 1000V 2500V 5000V	30k $\Omega$ to 2T $\Omega$ 100k $\Omega$ to 4T $\Omega$ 100k $\Omega$ to 10T $\Omega$ 300k $\Omega$ to 10T $\Omega$	—	—	0 to 49.99 $\mu$ F	2500Vac 4000Vdc	Rechargeable NiMH Battery	Digital/ Analog	Yes
5070	2130.30	500V 1000V 2500V 5000V	30k $\Omega$ to 2T $\Omega$ 100k $\Omega$ to 4T $\Omega$ 100k $\Omega$ to 10T $\Omega$ 300k $\Omega$ to 10T $\Omega$	—	—	0 to 49.99 $\mu$ F	2500Vac 4000Vdc	Rechargeable NiMH Battery	Graphic/ Digital	Yes
6550	2130.31	500V 1000V 2500V 5000V 10,000V	10k $\Omega$ to 2000G $\Omega$ 10k $\Omega$ to 4000G $\Omega$ 10k $\Omega$ to 10,000G $\Omega$ 10k $\Omega$ to 15,000G $\Omega$ 10k $\Omega$ to 25,000G $\Omega$	—	—	0.001 to 9.999 $\mu$ F 10.00 to 19.99 $\mu$ F	0 to 2500Vac 0 to 4000Vdc	Rechargeable NiMH Battery	Digital/ Analog	Yes
6555	2130.32	500V 1000V 2500V 5000V 10,000V 15,000V	10k $\Omega$ to 2000G $\Omega$ 10k $\Omega$ to 4000G $\Omega$ 10k $\Omega$ to 10,000G $\Omega$ 10k $\Omega$ to 15,000G $\Omega$ 10k $\Omega$ to 25,000G $\Omega$ 10k $\Omega$ to 30,000G $\Omega$	—	—	0.001 to 9.999 $\mu$ F 10.00 to 19.99 $\mu$ F	0 to 2500Vac 0 to 4000Vdc	Rechargeable NiMH Battery	Digital/ Analog	Yes