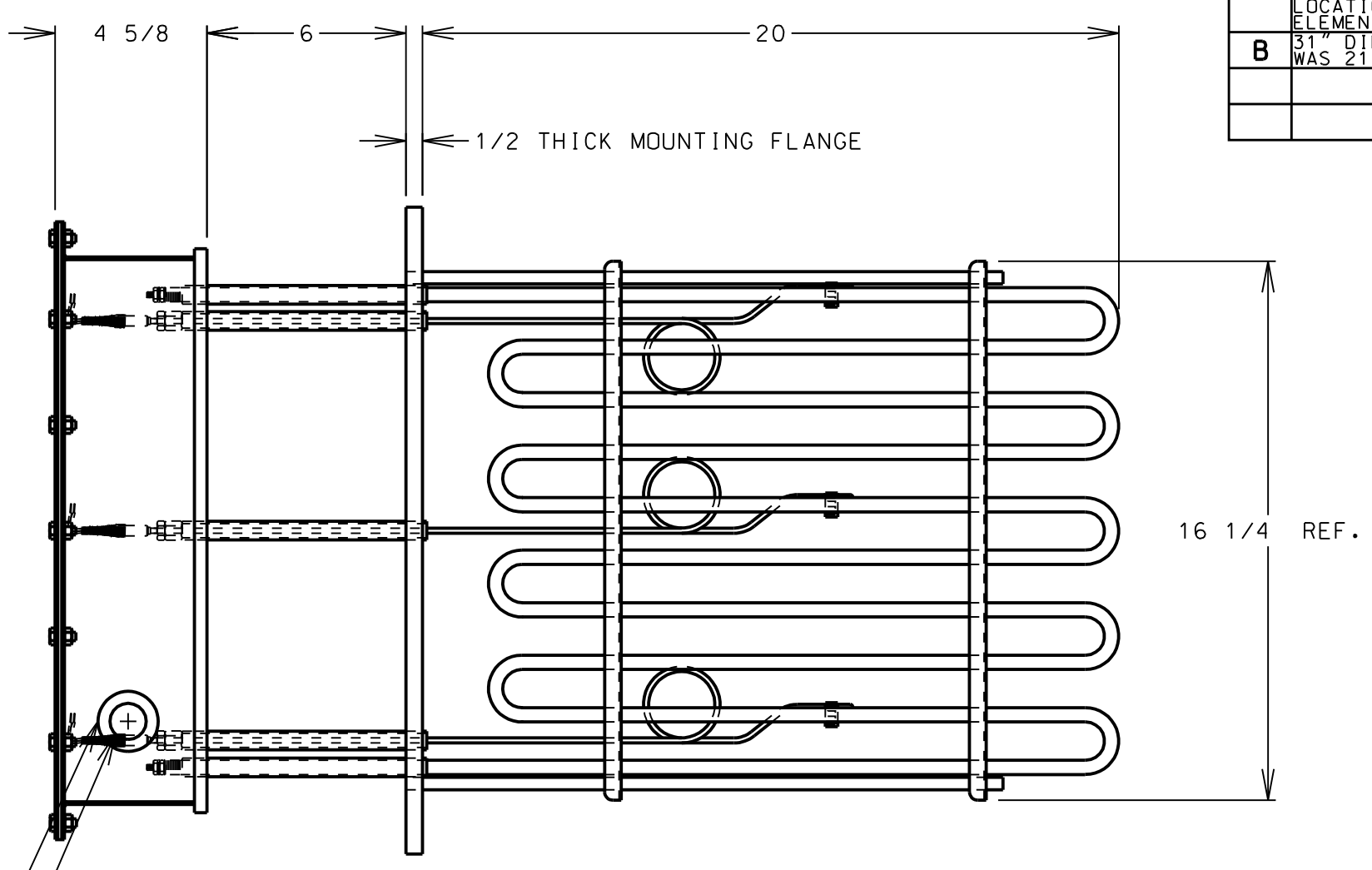
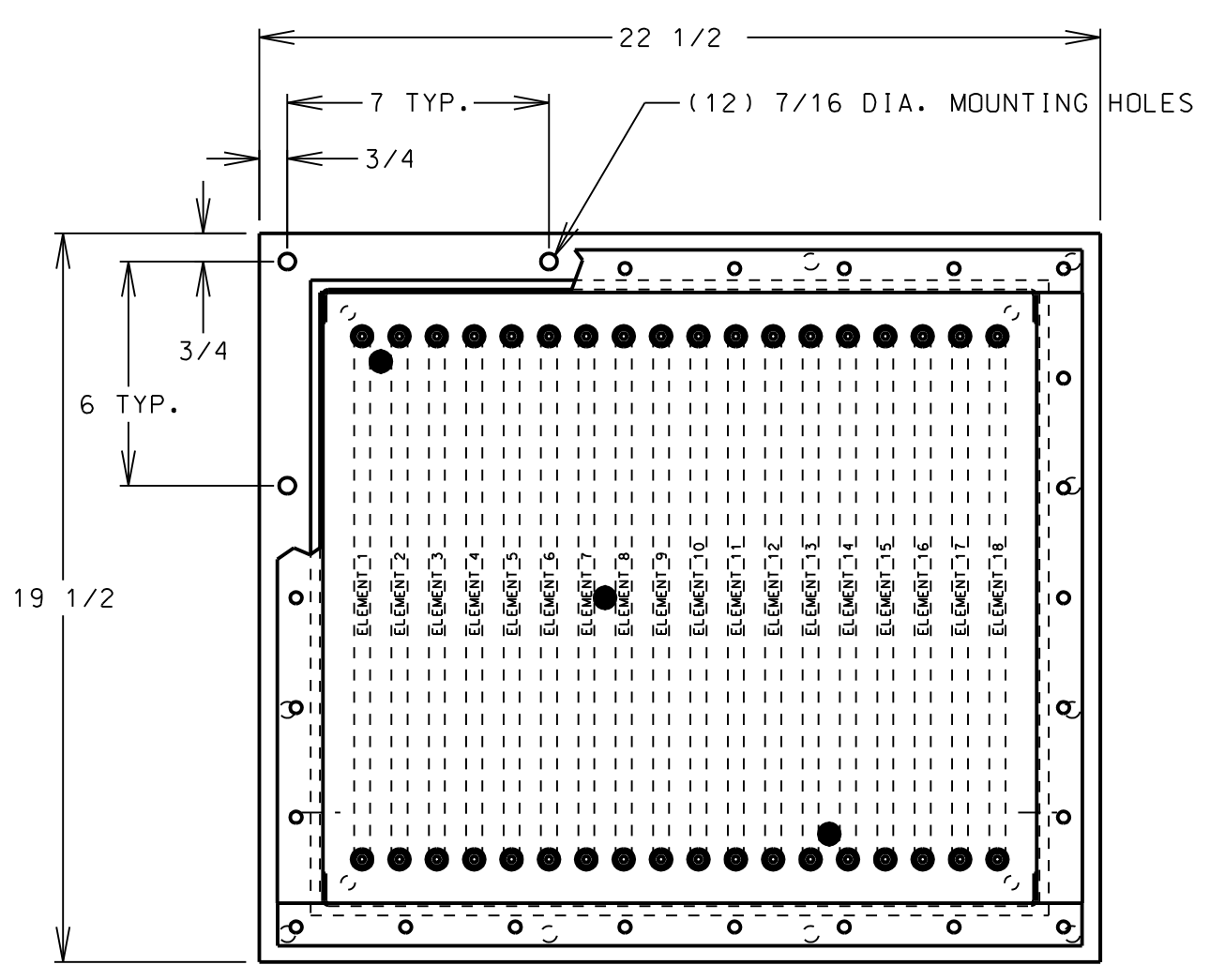
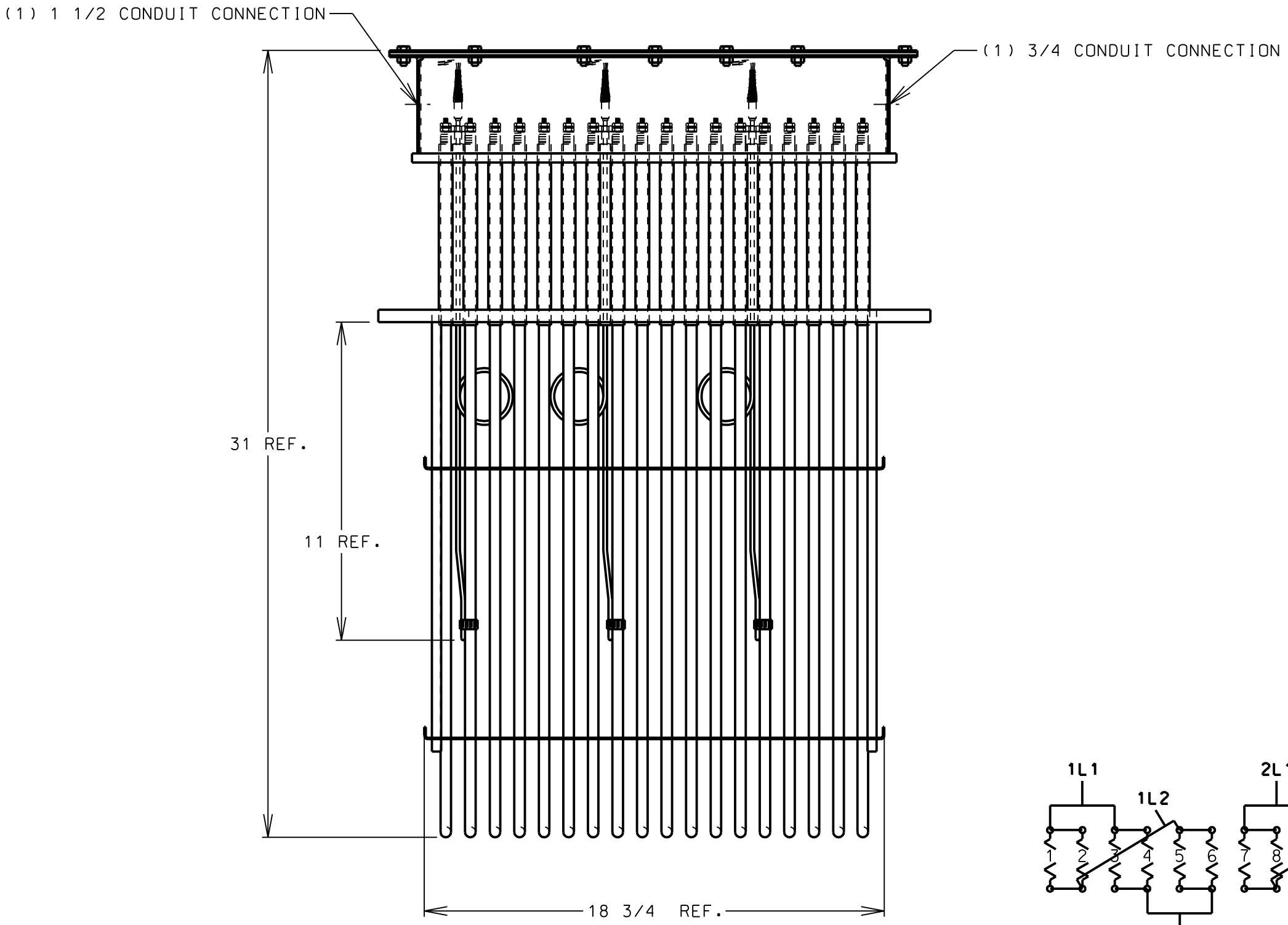


REVISIONS			
REV.	DESCRIPTION	DATE	APPROVED
A	REV. MTG. HOLE LOCATIONS AND QTY.; REV. T COUPLE ELEMENT NUMBERING.	04-13-04	MEO
B	31" DIM. WAS 32"; 20" DIM. WAS 21"; ECO EC680	03-01-11	RWF

DWG NO 6-1-482-1



(1) 1 1/2 CONDUIT CONNECTION
 (1) 3/4 CONDUIT CONNECTION OPPOSITE SIDE

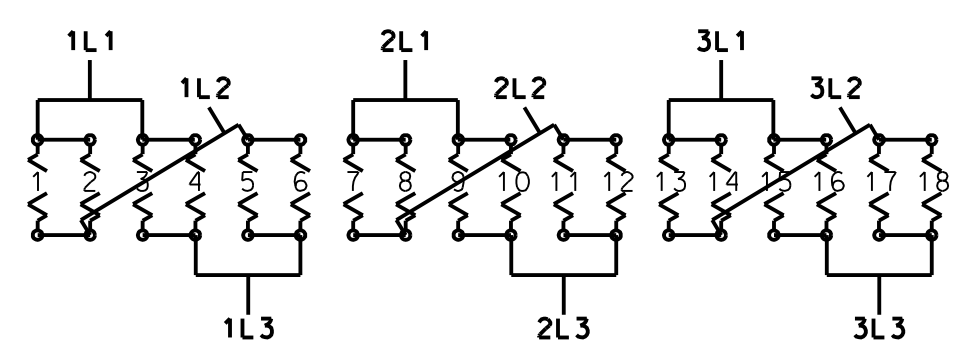


SPECIFICATIONS:

- RATING: 480 VOLT, 30 KW, 3PH
- ELEMENT: (18) 0.430 DIA. TUBULAR ELEMENTS, INCOLOY[®] SHEATH, FORMED TO FIGURE 16 OF WATLOW CATALOG, RATED AT 6.7 WATTS PER SQ. INCH. ELEMENTS ARE WELDED INTO FLANGE.
- FLANGE: 1/2" THICK 304 S/S MATERIAL
- ENCLOSURE: NEMA TYPE 4 CONSTRUCTION, MATERIAL IS CARBON STEEL. ENCLOSURE WILL BE PROVIDED WITH (1) 1 13/16 DIA. HOLE FOR 1 1/2" CONDUIT CONNECTION FOR INCOMING POWER AND (1) 1 3/32 DIA. HOLE FOR 3/4" CONDUIT FOR EXTENSION WIRE CONNECTION.
- FRAME: ELEMENT SUPPORTS AND TIERODS WILL BE 304 S/S CONSTRUCTION.
- SENSOR: (3) ANSI TYPE "K" THERMOCOUPLES, CLAMPED TO ELEMENTS #2, #8 AND #14 FOR OVER-TEMPERATURE SENSING.
- WIRING: UNIT SHALL BE WIRED IN (3) 3PH CIRCUITS, DELTA CONFIGURATION. EACH CIRCUIT CONSISTS OF (6) ELEMENTS AND IS RATED AT 10 KW. INCOMING POWER CONNECTIONS SHALL BE MADE TO BOX TYPE COMPRESSION FITTING FOR WIRE SIZES #14-#4 AWG STRANDED CONDUCTORS.

NOTES:

- ALL EXPOSED STEEL SURFACES SHALL BE PAINTED WITH A CORROSION INHIBITING GRAY PRIMER.
- IF HEATER CIRCUITS ARE STAGED, THE CIRCUIT CONTAINING THE ELEMENT THAT THERMOCOUPLE IS ATTACHED TO SHALL BE FIRST ON, LAST OFF



WIRING SCHEMATIC

UNLESS OTHERWISE SPECIFIED DIMENSIONS ARE IN INCHES	DRAWN	DATE	<p>#6 INDUSTRIAL LOOP RD HANNIBAL, MO 63401 www.watlow.com</p>
	ENGRG	DATE	
.X = ± 0.1 .XX = ± 0.06 .XXX = ± 0.031 .XXXX = ± 0.0050 ANGLES = ± 2° FRACTIONS = ± 1/16	CHECKED	DATE	<p>TITLE CUSTOMER DWG- NOT FOR PRODUCTION USE</p> <p>DUCT HEATER, (18) ELEMENTS, FIGURE 16 FORMATION, NEMA 4 HOUSING WITH STANDOFF, (3) TYPE 'K' HIGH LIMIT THERMOCOUPLES</p>
	O.A.	DATE	
<p>WATLOW ELECTRIC MANUFACTURING COMPANY CLAIMS PROPRIETARY RIGHTS IN THE MATERIAL HEREIN DISCLOSED. IT IS SUPPLIED IN CONFIDENCE, WITHOUT PREJUDICE TO ANY PATENT RIGHTS OF WATLOW, AND MAY NOT BE REPRODUCED OR USED TO MANUFACTURE ANYTHING SHOWN THEREIN WITHOUT WATLOW'S WRITTEN PERMISSION</p>			<p>SCALE</p> <p>SIZE C</p> <p>CAGE CODE</p> <p>DWG NO 6-1-482-1</p> <p>REV B</p>
CUSTOMER VECTOR SYSTEMS	MAT'L COMPOSITE	SCALE NTS	<p>PART NO</p> <p>SHEET 1 OF 1</p>

6-1-482-1	480	30	3
PRODUCT NUMBER	VOLTS	KW	PH