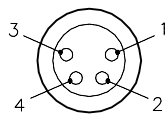


## MALE END VIEW



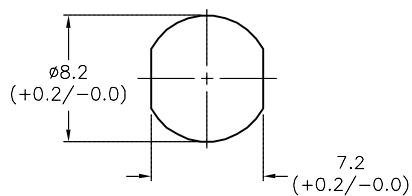
1 = BROWN  
2 = WHITE  
3 = BLUE  
4 = BLACK



## RECOMMENDED PANEL CUTOUTS

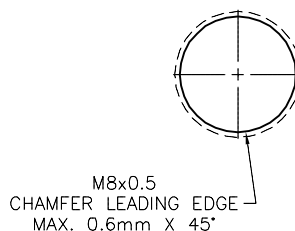
## UNTHREADED

PANEL THICKNESS 1.5mm MIN



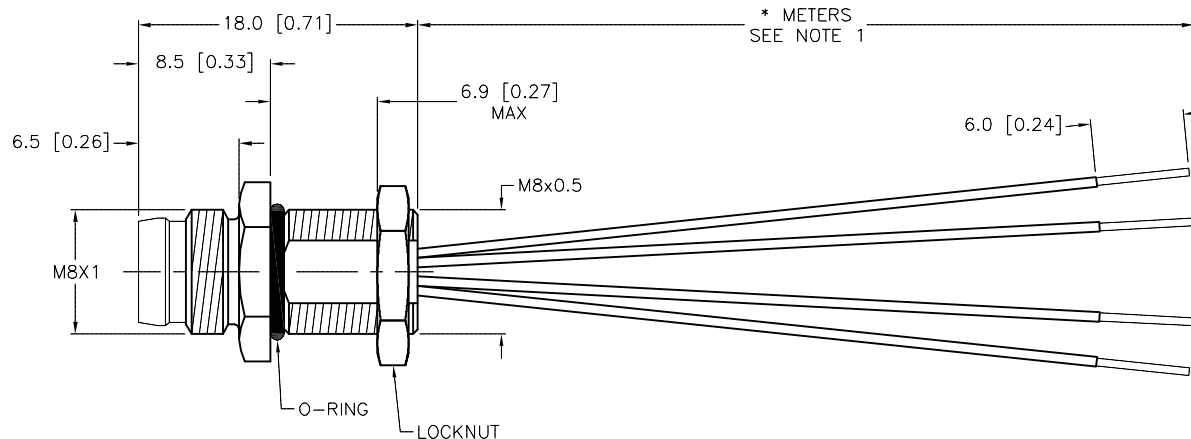
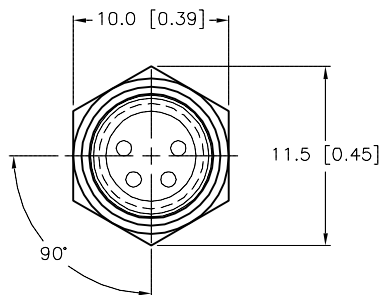
## THREADED

PANEL THICKNESS 2.5mm MIN



## SPECIFICATIONS

CONTACT CARRIER MATERIAL/COLOR	NYLON OR TPU/BLACK
CONTACT MATERIAL/PLATING	BRASS/GOLD
HOUSING MATERIAL/PLATING	BRASS/NICKEL
O-RING MATERIAL	NBR
RATED CURRENT [A]	4.0 A
RATED VOLTAGE [V]	125 VAC/DC
CONDUCTOR INSULATION MATERIAL	PVC
NUMBER OF CONDUCTORS [AWG]	4x24 AWG
TEMPERATURE RANGE	-40°C to +105°C (-40°F to +221°F)
PROTECTION CLASS	MEETS NEMA 1,3,4,6P AND IEC IP67



CABLE LENGTH	TOLERANCE*
ALL LENGTHS	+ 4% (OR 50mm) OF LENGTH - 0% (OR 0mm) OF LENGTH WHICHEVER IS GREATER
STRIP LENGTH	TOLERANCE*
0-7mm	±0.5mm
8-29mm	±1.0mm
30-49mm	±2.0mm
50-69mm	±3.0mm
70-100mm	±4.0mm
OVER 100mm	±5.0mm

\* UNLESS OTHERWISE SPECIFIED

## NOTES:

1. "\*" INDICATES CABLE LENGTH IN METERS. CONTACT TURCK TO ORDER SPECIFIC LENGTHS.

2. "/CS14894" DESIGNATES CUSTOM STRIP LENGTH OF 6mm.

SOURCE DRAWING - FOR REFERENCE ONLY

RELATED DOCUMENTS		3RD ANGLE PROJECTION		<div>THIS DRAWING IS CONFIDENTIAL AND THE PROPERTY OF TURCK INC. USE OF THIS DOCUMENT WITHOUT WRITTEN PERMISSION IS PROHIBITED.</div> <div>TURCK</div> <div>3000 CAMPUS DRIVE MINNEAPOLIS, MN 55441 1-800-544-7769 (763) 553-7300 (763) 553-0708 fax www.turck.us</div>				
1. 2. 3. 4.								
MATERIAL		DRFT	NF	DATE	02/26/15	DESCRIPTION  MFSS 4-*/CS14894		
SEE SPECIFICATIONS		APVD	N.M.	SCALE	1=.5			
FINISH		UNIT OF MEASUREMENT				IDENTIFICATION NO.		REV
SEE SPECIFICATIONS		MILLIMETER [ INCH ]						B
		DO NOT SCALE THIS DRAWING				FILE: 777034829		SHEET 1 OF