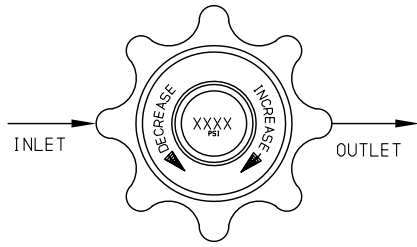
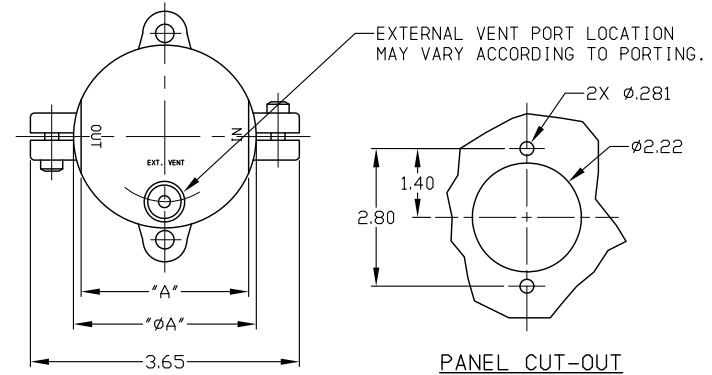
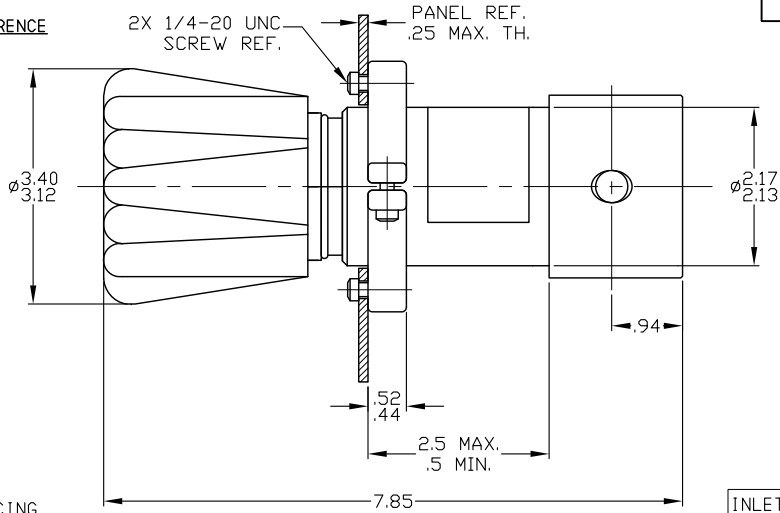


26-20XXXXXSSXX

ALL DIMENSIONS REFERENCE



PORTING CONFIGURATION



PANEL CUT-OUT

26-2000 SERIES REGULATOR

SPRING LOADED, HAND OPERATED, PRESSURE REDUCING, WITH INTEGRAL SELF RELIEVING VENT VALVE.

GENERAL SPECIFICATIONS:

INLET PRESSURE: SEE TABLE I
 OUTLET PRESSURE: SEE TABLE II
 DESIGN PROOF PRESSURE: 150% OF RATED PRESSURE
 PRESSURE RATING: PER CRITERIA OF ANSI/ASME B31.3
 AMBIENT TEMPERATURE: SEE NOTE 4
 MEDIA TEMPERATURE: LIMIT DETERMINED BY MOST RESTRICTIVE ELEMENT (SEE TABLE IV & VII)

LEAKAGE: BUBBLE TIGHT (NONMETALLIC SEAT)
 2 DROPS/MINUTE @ 150 SUS @ 2500 PSIG (METAL SEAT)

FLOW CAPACITY (Cv): SEE TABLE VI
 WEIGHT: APPROXIMATELY 5 1/2 LBS
 MAX. OPERATING TORQUE: N/A

MATERIALS CONTACTING LINE MEDIA:

SEAT, MAIN VALVE: SEE TABLE VII
 SEAT, VENT: SEE TABLE VII
 O-RING: SEE TABLE IV
 BACK-UP RING: PTFE
 FILTER: 26-201X-XX BRONZE
 26-206X-XX, 26-209X-XX 300 SERIES SST
 NO FILTER W/ 17-4 SST SEAT
 BODY: SEE TABLE I
 REMAINING PARTS: 300 SERIES SST & 17-4 SST

ASSEMBLY INFORMATION:

FOR ASSEMBLY OF THIS UNIT USE SPEC: A61234-03* (NONMETALLIC SEAT)
 A61234-04* (METAL SEAT)

NOTES:

- PRESSURE AT WHICH REGULATOR IS USED MUST BE COMPATIBLE WITH THE PRESSURE RATING OF THE REGULATOR AND PORT SIZE/TYPE PROVIDED.
- 15,000 PSI INLET REQUIRES A PCTFE BACK-UP RING ON MAIN VALVE (P/N 1634) AND IS AVAILABLE IN 1/4 NPT, 1/4 MED PRESS, 1/4 HIGH PRESS, 3/8 MED PRESS, 3/8 HIGH PRESS, 9/16 MED PRESS AND 9/16 HIGH PRESS ONLY.
- PCTFE NOT AVAILABLE WITH 15,000 PSI INLET. Cv .12 & VESPEL SEAT: NOT AVAILABLE WITH 15,000 PSI INLET.
- MAXIMUM AMBIENT TEMPERATURE RATING IS 165°F FOR REGULATORS WITH PLASTIC HAND KNOBS OR AIR ACTUATORS. MAXIMUM AMBIENT TEMPERATURE RATING IS 140°F FOR REGULATORS WITH PCTFE OR PTFE SEATS IF OFFERED. MINIMUM AMBIENT TEMPERATURE IS DETERMINED BY SOFT GOODS MINIMUM MEDIA TEMPERATURE.

SERIES NUMBER: 26-2061A245170
 SPRING LOAD

INLET & OUTLET PORT	"A"
ALL 1/4 EXCEPT NPT	2.30
1/4 NPT	Ø2.48
3/8 NPT	Ø2.48
ALL 3/8 EXCEPT NPT	2.90
1/2 MS33649 & AS5202	2.90
1/2 NPT	Ø3.20
9/16 M.P., H.P.	3.04

CODE LTR.	MAIN VALVE SEAT AND VENT SEAT MATERIAL	MEDIA TEMPERATURE
2	NYLATRON	-30°F TO +200°F
3	PCTFE	-30°F TO +140°F
5	17-4 SST	-30°F TO +200°F
7	VESPEL	-30°F TO +200°F
8	PEEK	-30°F TO +200°F

DASH NO.	FLOW CAPACITY (Cv)
1	.02 (NOT AVAILABLE FOR METAL SEATED MODELS)
2	.06
3	.12 (METAL & VESPEL SEAT ONLY)

DASH NO./LTR.	INLET & OUTLET PORT SIZE
4	1/4
6	3/8
8	1/2 (NOT AVAILABLE IN HIGH PRESS, MED. PRESS PORTS)
9	9/16 (NOT AVAILABLE IN SAE, NPT, MS33649)

DASH NO.	BODY MATERIAL	MAX. INLET PRESSURE
1	BRASS	6000 PSI
6	316 SST	10000 PSI
9	316 SST	15000 PSI

DASH NO.	OUTLET PRESSURE
1	200-10000 PSI (SST BODY ONLY)
2	50-6000 PSI
3	25-4000 PSI
4	15-2500 PSI
5	10-1500 PSI
6	5-800 PSI
7	5-500 PSI

DASH NO.	INLET & OUTLET PORT TYPE	VENT PORT
1	SAE	1/4 SAE
2	NPT	1/4 NPT
3	MS33649	1/4 MS33649
4	HIGH PRESSURE	1/4 NPT
6	MEDIUM PRESSURE	1/4 NPT
7	AS5202	1/4 AS5202

CODE LTR.	SOFT GOODS MATERIAL			MEDIA TEMPERATURE
	DYNAMIC	STATIC	BACK-UP RING	
A	PTFE	FKM	PTFE	-15°F TO +200°F
B	BUNA-N 90	BUNA-N 90	PTFE	-30°F TO +165°F
D	BUNA-N	BUNA-N	PTFE	-30°F TO +165°F
J	PTFE. ENCAP.	FKM	PTFE	-15°F TO +200°F
N	NEOPRENE	NEOPRENE	PTFE	-30°F TO +200°F
T	FKM	FKM	PTFE	-15°F TO +200°F
U	URETHANE	URETHANE	PTFE	-30°F TO +200°F
V	KALREZ	KALREZ	PTFE	+20°F TO +200°F
Z	EP	EP	PTFE	-30°F TO +200°F

CF	6-13-19	50471-19	EWN	JTR
CE	9-18-18	50067-18	BG	WRB
CD	6-8-17	50524-17	MGM	WRB
CC	2-27-17	51013-16	MGM	WRB
CB	7-21-16	50717-16	MGM	WRB
CA	9-22-15	51188-15	PEG	WRB
BY	7-28-14	70452-14	SKO	EJB
BW	12-10-13	14416-13	DRM	EJB
BV	9-19-12	5810-12	CMB	DP
BU	5-24-12	2079-12	DLH	EJB

TESCOM CORPORATION
 INDUSTRIAL CONTROLS DIVISION
 ELK RIVER, MN USA

INFORMATION CONTAINED ON THIS DOCUMENT IS THE PROPERTY OF TESCOM CORPORATION. NO RIGHTS ARE CONVEYED NOR IS PERMISSION TO DISCLOSE TO OTHERS GIVEN.

UNLESS OTHERWISE SPECIFIED:
 ANGLES: ±1°
 SURFACE ROUGHNESS: 100/
 CORNER & FILLET RADI: .005-.020
 THREADS: CLASS 2
 REMOVE ALL BURRS
 MFG. SPEC. 60301

DRAWING MADE IN THIRD ANGLE PROJECTION (DO NOT SCALE DRAWING)

TOP VIEW	
GAUGE PORT OPTIONS - 1/4" NPT	
0 - NO GAUGE PORTS	
1 - ONE OUTLET GAUGE AT 90°	
2 - TWO GAUGE PORTS AT 60°	
3 - TWO GAUGE PORTS AT 60° (LEFT HAND INLET)	
4 - TWO GAUGE PORTS AT 90°	
5 - ONE OUTLET GAUGE AT 90° (LEFT HAND INLET)	
6 - THREE GAUGE PORTS	

FOR MORE PORTING OPTIONS SEE SPEC. 62279 (ADDED PRICE FOR OPTION MAY APPLY)

MATERIAL: λ

FINISH: λ

DRAWN BY: SJW	CHECKED BY: MKS	APPROVED BY: MKS
5-13-97	5-15-97	5-15-97

INSTALLATION INFO.

SCALE: 1:1	SIZE NUMBER: C	26-20XXXXXSSXX
CODE NO. 13669	SHT. 1	OF 1