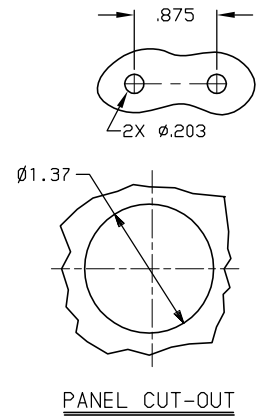
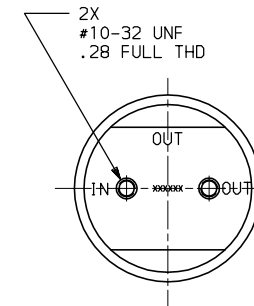
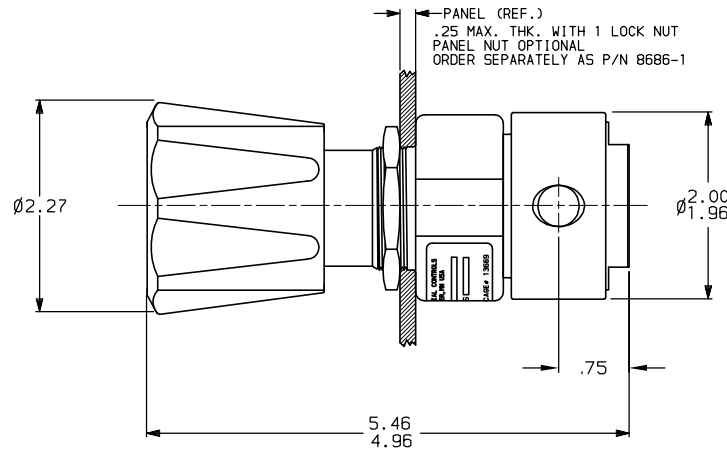
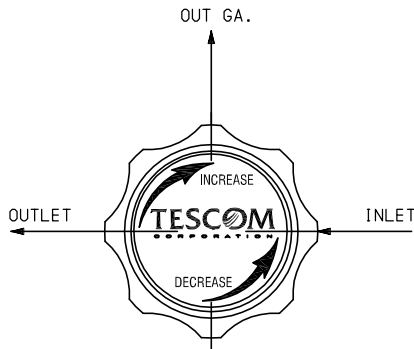


ALL DIMENSIONS REFERENCE

44-52XX-XXX-089



44-5200 SERIES REGULATOR

SPRING LOADED, HAND OPERATED, PISTON SENSED
NON VENTING, PRESSURE REDUCING REGULATOR

MODIFICATION FEATURES:

PORTING: OUT GA. PORT AT 90°
HYDRAULIC SERVICE
NO FILTER
VALVE SPRING: ELGILOY

GENERAL SPECIFICATIONS:

INLET PRESSURE: SEE TABLE V
OUTLET PRESSURE: SEE TABLE II
DESIGN PROOF PRESSURE: 150% OF RATED PRESSURE
PRESSURE RATING: PER CRITERIA OF ANSI/ASME B31.3
OPERATING TEMPERATURE: -15°F TO +200°F
LEAKAGE: BUBBLE TIGHT

FLOW CAPACITY (Cv): SEE TABLE V

WEIGHT: APPROXIMATELY 2 LBS.

MATERIALS CONTACTING LINE MEDIA:

SEAT: VESPEL SP1

SEAT VENT: NONE

O-RING: VITON

BODY: SEE TABLE I

REMAINING PARTS: BRASS & 300 SERIES SST

ASSEMBLY INFORMATION:

FOR ASSEMBLY OF THIS UNIT USE SPEC: A61746-01

SERIES NUMBER

44-5263-241-089

MODIFICATION NUMBER

TABLE I	DASH NO.	BODY MATERIAL
	1	BRASS
	6	316 SST

TABLE II	DASH NO.	OUTLET PRESSURE	PROOF PRESSURE
	0	1-25 PSI	150%
	1	1-50 PSI	
	2	2-100 PSI	
	3	2-250 PSI	
	5	5-500 PSI	
	6	5-600 PSI	

TABLE V	DASH NO./LTR	MAX. INLET PRESSURE:	FLOW CAPACITY:
	1	3500 PSI	Cv. = .06
	2	400 PSI	Cv. = .15
	3	3500 PSI	Cv. = .15

TABLE IV	DASH NO./LTR	INLET & OUTLET PORT SIZE
	4	1/4"

TABLE III	DASH NO.	IN & OUT PORT TYPE
	2	NPT

NOTES:

- REGULATOR INCORPORATES AN ADJUSTABLE STOP WHICH ALLOWS THE MAXIMUM OUTLET PRESSURE TO BE LIMITED TO ANY VALUE BETWEEN THE MAXIMUM RATED VALUE AND 50% OF THE MAXIMUM RATED VALUE.

TESCOM CORPORATION INDUSTRIAL CONTROLS DIVISION ELK RIVER, MN USA				MATERIAL: X	
INFORMATION CONTAINED ON THIS DOCUMENT IS THE PROPERTY OF TESCOM CORPORATION. NO RIGHTS ARE CONVEYED NOR IS PERMISSION TO DISCLOSE TO OTHERS GIVEN.				FINISH: X	
UNLESS OTHERWISE SPECIFIED: .0 ± .020 ANGLES: ±1° .00 ± .010 .000 ± .005 SURFACE ROUGHNESS: 100/ CORNER & FILLET RADI: .005-.020 THREADS: CLASS 2 REMOVE ALL BURRS MFG. SPEC. 00301				DRAWN BY: EWN 4-28-04 CHECKED BY: DP 4-28-04 APPROVED BY: DP 4-28-04	
REVISIONS A 4-28-04 245-04 EWN DP REV. DATE ECO NO. BY: APPR				NAME INSTALLATION INFO	
REFERENCE DRAWING(S)				SCALE: 1:1 SIZE C NUMBER 44-52XX-XXX-089 CODE NO. 13669 SHT. 1 OF 1	